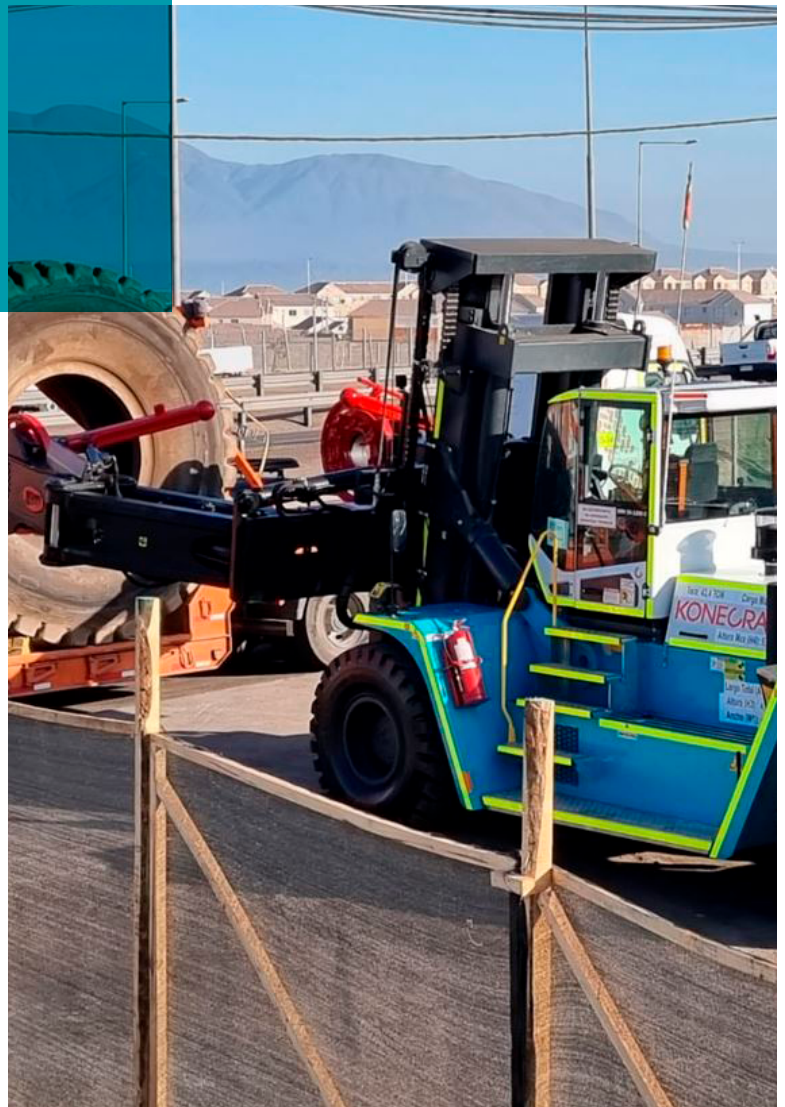


KAL TIRE S.A.

Moving huge tires in a Chilean mine

“After we met Kal Tire’s specific requirements, and added the WBM attachment, their tire handling operations rose to another level.”

Mr Andrés Ramirez,
Regional Sales Development
Manager, Konecranes Lift Trucks



Kal Tire S.A. provides a range of tire management services for mines in Chile. The company is part of the Kal Tire Mining Tire Group, an international leader in mining tire service and supply. In this specialized field, expert knowledge is required for the proper maintenance of tires to maximize the performance and safety of mining equipment.

The challenge

The Centinela mine is an open pit copper mine located some 1,350 km north of the Chilean capital Santiago, in one of the country's most important mining areas. Enormous mining trucks need giant tires for the uneven surfaces in the mine on which they drive. Kal Tire has a tire service contract with the mine, for which they required two specialist forklifts to be continuously on-site to move and help change the tires.

The solution

Konecranes provided two SMV 33-1200 C forklifts with a capacity of 33 tons and a wheelbase of 4,750 mm for stability and maneuverability. The fork assembly has a fully-integrated WBM tire-handling clamp with a low-profile body and grip arm design to give drivers a clear view of the load. Bead-breaking arms facilitate vertical dismounts and a hydraulic accumulator on the mast provides shock absorption against rough terrain.

The benefits

Optimized for the demands of a mining environment, the forklifts provide a smoother ride for both drivers and tires, better visibility for operational safety and high-pressure filters for more durable hydraulics in dusty conditions. "After we met Kal Tire's specific requirements, and added the WBM attachment, their tire handling operations rose to another level." says Andrés Ramirez, Regional Sales Development Manager for Konecranes Lift Trucks.



TRUCONNECT® Premium follows each truck's performance through usage data, including tire pressure and shock monitoring, essential information to ensure efficient operation in a sometimes unpredictable mining area.




Kal Tire

Héctor Gómez Cobo N ° 1010

Barrio Industrial La Negra,
Antofagasta, Chile

Phone: +56 55 2642100

www.kaltiremining.com/en/

© 2023 Konecranes. All rights reserved. 'Konecranes', 'Lifting Businesses' and  are either registered trademarks or trademarks of Konecranes.

This publication is for general informational purposes only. Konecranes reserves the right at any time, without notice, to alter or discontinue the products and/or specifications referenced herein. This publication creates no warranty on the part of Konecranes, express or implied, including but not limited to any implied warranty or merchantability or fitness for a particular purpose.

kcliftrucks.com